

 **SENNHEISER**



Ear Canal Phones
CX 980

Instruction manual

Important safety instructions

In order to prevent hearing damage and health problems:

- ▶ Set the volume to a low level before inserting the ear canal phones into your ears.
- ▶ Avoid listening at high volume levels for long periods of time.
- ▶ Keep the ear canal phones at least 1.2" (3 cm) from cardiac pacemakers or implanted defibrillators.

In order to prevent accidents:

- ▶ Do not wear the ear canal phones in an environment that requires your special attention (e.g. in traffic).
- ▶ Keep the ear canal phones out of reach of children who could swallow smaller pieces.

In order to prevent damage to the ear canal phones:

- ▶ Do not expose the ear canal phones to heat (hair dryer, radiator, etc.) and do not store in direct sunlight for extended periods.
- ▶ Protect the ear canal phones from moisture.

Delivery includes

- 1 pair of CX 980 ear canal phones with volume control
- 3 pairs of ear adapters, white ring (size **S**, **M**, **L**)
- 3 pairs of ear adapters, pink ring (size **S**, **M**, **L**)
- 1 pair of ear adapters, memory foam
- 2 pairs of spare diaphragm guards
- 1 cleaning tool
- 1 cable clip
- 1 in-flight adapter
- 1 carrying case
- 1 storage pouch for ear adapters
- 1 instruction manual

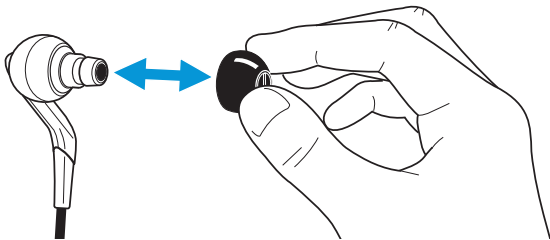


Accessories are available from your Sennheiser partner. A list of suitable accessories can be found on our website at www.sennheiser.com.

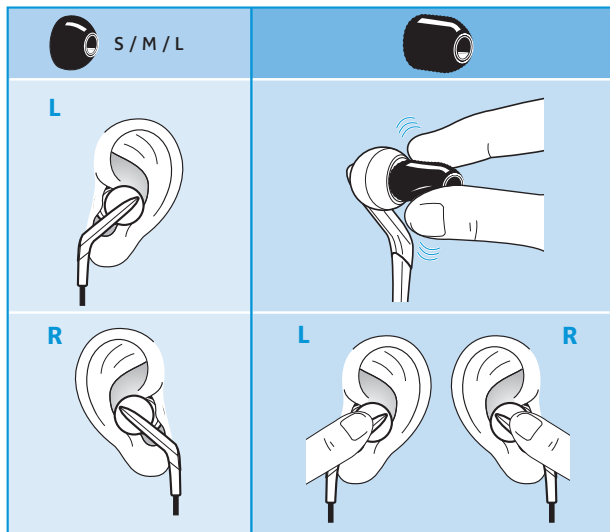
Selecting and changing the ear adapters

To ensure the best possible sound performance, the ear adapters must seal off your ear canals. You can choose between the following types of ear adapters:

- **Silicone rubber, white ring**
natural bass response
 - **Silicone rubber, pink ring**
punchy bass response
 - **Memory foam**
optimum sound, punchy bass response, comfortable and secure fit
- ▶ Select ear adapters of the correct size and with the desired characteristics.
- ▶ Attach the ear adapters to the ear canal phones.



Inserting ear canal phones into the ears



WARNING! Interference with cardiac pacemakers

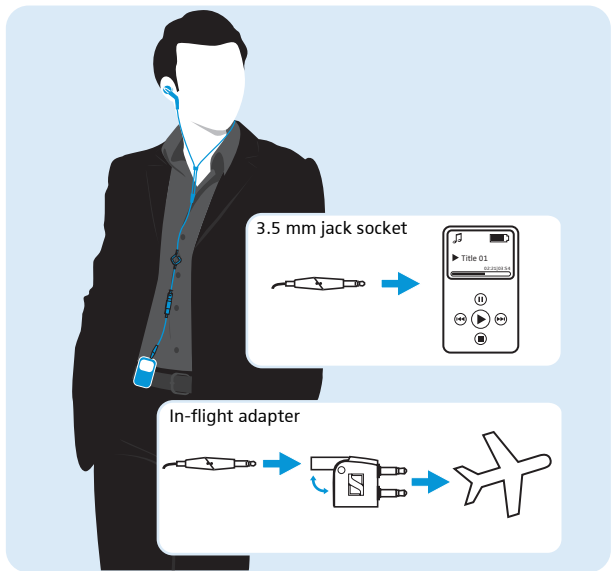


The headphones generate a magnetic field which could interfere with cardiac pacemakers and implanted defibrillators.

- ▶ Keep the earphones at least 1.2" (3 cm) away from cardiac pacemakers and implanted defibrillators.

Connecting the ear canal phones to the audio source

- ▶ Connect the 3.5 mm jack plug of the cable directly to your audio source or use a suitable adapter.



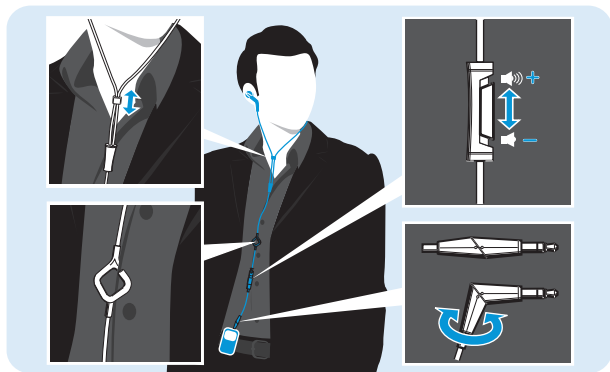
Adjusting the volume and routing the cable

WARNING! Hearing damage due to high volumes!



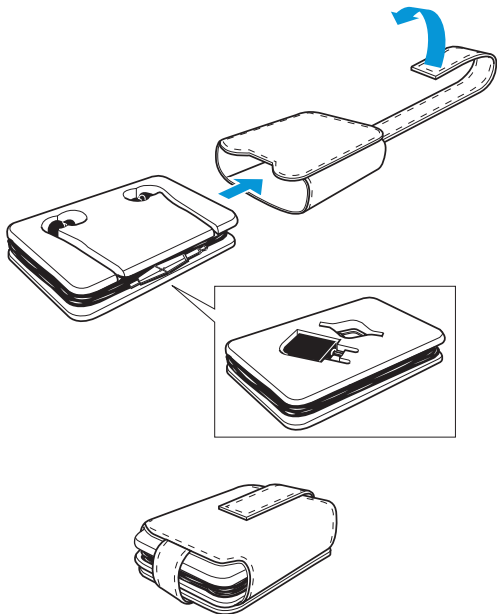
Listening at high volume levels for long periods can lead to permanent hearing defects. Please protect your hearing, Sennheiser headphones also sound exceptionally good at low volumes.

- ▶ Set the volume to a medium level (see diagram).



Transporting the ear canal phones

- ▶ For space-saving and safe transportation, stow the ear canal phones in the carrying case as shown.



Cleaning the ear canal phones

CAUTION! Danger of damage to the ear canal phones

Solvents and other cleansing agents can damage your ear canal phones.

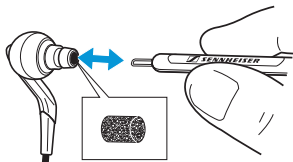
- ▶ Do not use any solvents or cleansing agents.
-

For reasons of hygiene, clean your ear canal phones regularly:

- ▶ Use only a slightly damp cloth to clean the ear canal phones.
- ▶ Carefully remove buildup from the ear canal phones and ear adapters.

Replacing the diaphragm guards

The diaphragm guards protect the diaphragms of the ear canal phones and contribute to the sound quality of the ear canal phones. Ensure that the diaphragm guards are constantly installed in the ear canal phones.



- ▶ Replace dirty diaphragm guards using the supplied cleaning tool or tweezers.

Specifications

Transducer principle	dynamic, ear canal phones
Frequency response	16 to 24,000 Hz
Nominal impedance	32 Ω
Sound pressure level at 1 kHz and 1 volt	115 dB
THD at 1 kHz, 100 dB SPL	< 0.1%
Connector	3.5 mm stereo jack plug, nickel-plated
Cable length	1.2 m
Weight	approx. 20 g

Manufacturer Declarations

Warranty

Sennheiser electronic GmbH & Co. KG gives a warranty of 24 months on this product.

For the current warranty conditions, please visit our website at www.sennheiser.com under "Service & Support" or contact your Sennheiser partner.

Declaration of Conformity

This product is in compliance with the essential requirements and other relevant provisions of directives:

- EMC Directive (2004/108/EC)
- RoHS Directive (2002/95/EC)
- WEEE Directive (2002/96/EC)

The declarations are available at www.sennheiser.com. Before putting the device into operation, please observe the respective country-specific regulations!

The product meets the following requirements:





Sennheiser electronic GmbH & Co. KG
Am Labor 1, 30900 Wedemark, Germany
www.sennheiser.com

Printed in China
Publ. 08/09
A01