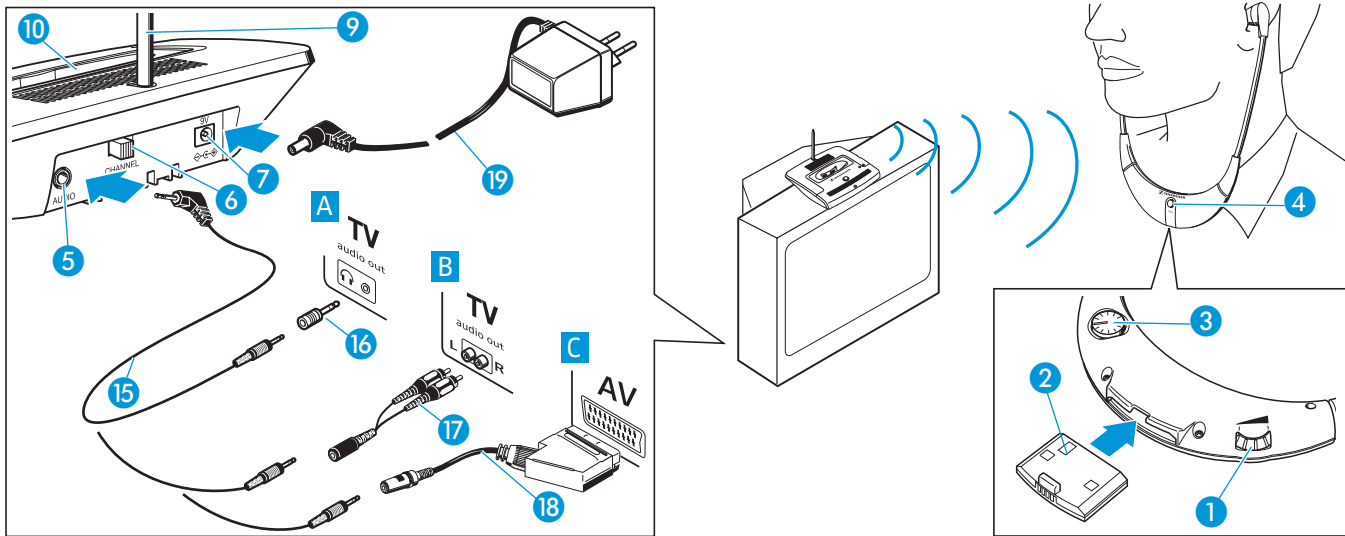



Quick instructions RS 4200

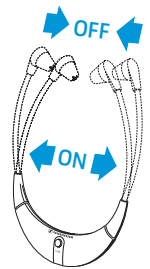


Connecting the system components

- ▶ Plug in one end of the connecting cable **15** to the socket on your sound source (e.g. television). If necessary, use one of the adapters **16**, **17** or **18** (not included). Plug in the other end of the connecting cable **15** to the blue socket **5** on the transmitter.
- ▶ Align the antenna **9** vertically.
- ▶ Connect the mains unit **19** to the transmitter **7** and to the mains.
- ▶ Place the receiver into the transmitter's charging compartment **10**.
- ▶ Before you use the rechargeable battery **2** for the first time, charge it until the LED  lights up green.
- ▶ Adjust the volume on your sound source to a sufficient (medium) level.

Switching on and using the stethoset receiver

- ▶ The receiver automatically switches on when you pull the earbows apart. First adjust the volume to a low level. This protects your hearing from damage. Then put the receiver on and adjust the volume to a comfortable level.
- ▶ If reception is subject to interference, press the **TUNE** button **4**.
- ▶ Use the balance control **3** to adjust the volume between the left and right ear.
- ▶ If you cannot hear anything through the receiver, increase the volume on your sound source.



Switching the stethoset receiver off

- ▶ The receiver automatically switches off when you take it off.

Charging the stethoset receiver

- ▶ Place the receiver into the transmitter's charging compartment **10** without exerting too much pressure. With a fully charged battery, the operating time is approx. 9 hours.

For details on the use of the RS 4200, please refer to the enclosed operating instructions.